

# THOMASITES FOR EARTH

*In keeping with the STS motto  
“**Light To Lighten**” we aspire to inspire  
sensitivity and awareness about the environment .  
This year , lets give some time to our environment .  
We ‘**Thomasites For Earth**’ present to you the  
green year.....*

LET'S LOOK AT THE GREEN

DAYS OF JAN - FEB



# GREEN DAYS



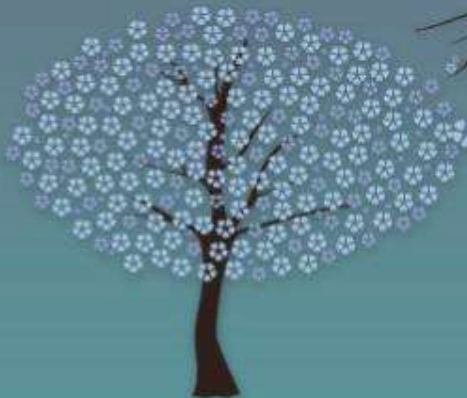
national bird day



world wetlands day

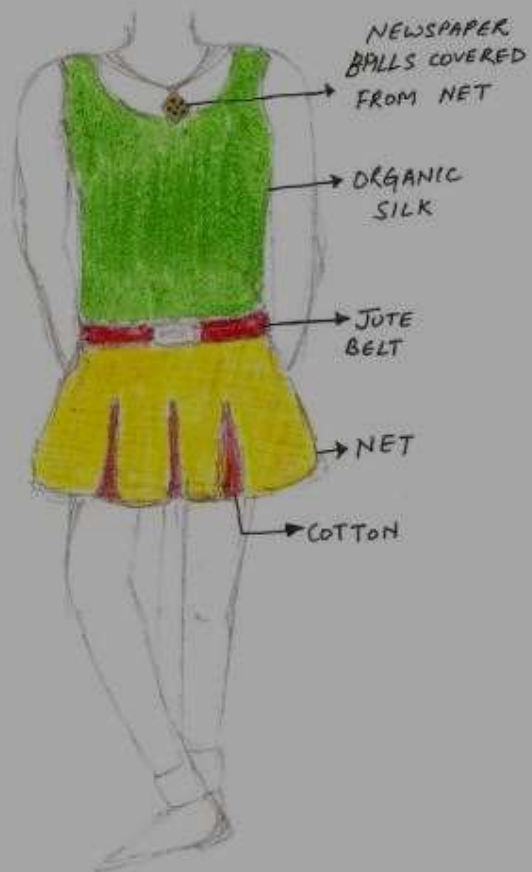


clean up day





**E-TRENDS**



**ACTIONS LEADING  
TO ENDANGERMENT  
OF ANIMALS**

*When discussing the causes of endangerment, it is important to understand that individual species are not the only factors involved in this dilemma.*

*Endangerment is a broad issue, one that involves the habitats and environments where species live and interact with one another.*

*Measures are being taken to help specific cases of endangerment, the universal problem cannot be solved until humans protect the natural environments where endangered species dwell.*

*Below are several factors leading to endangerment:*

# HABITAT DESTRUCTION :

- *It is quite apparent that human activity has greatly contributed to species endangerment. For example, although tropical forests may look as though they are lush, they are actually highly susceptible to destruction. This is because the soils in which they grow are lacking in nutrients.*
- *It may take Centuries to re-grow a forest that was cut down by humans or destroyed by fire, and many of the world's severely threatened animals and plants live in these forests. If the current rate of forest loss continues, huge quantities of plant and animal species will disappear.*



## **OVER EXPLOITATION :**

*•A species that faces overexploitation is one that may become severely endangered or even extinct due to the rate in which the species is being used. Unrestricted whaling during the 20<sup>th</sup> century is an example of overexploitation, and the whaling industry brought many species of whales to extremely low population sizes.*

*•Due to the trade in animal parts, many species continue to suffer high rates of exploitation. Even today, there are demands for items such as rhino horns and tiger bones in several areas of Asia. It is here that there exists a strong market for traditional medicines made from these animal parts .*

## MORE FACTORS

- *Disease, pollution, and limited distribution are more factors that threaten various plant and animal species.*
- *Domestic animals often transmit the diseases that affect wild populations, demonstrating again how human activities lie at the root of most causes of endangerment.*
- *Pollution has seriously affected multiple terrestrial and aquatic species, and limited distributions are frequently a consequence of other threats.*

TEST YOUR  
KNOWLEDGE

1) *There is no garbage left in this Scandinavian country. Almost all the household waste is used in its waste-to-energy program to generate heat and electricity. Name the country.*

- a) SWEDEN
- b) FINLAND
- c) NORWAY
- d) DENMARK

2) *Pests like BPH .GANDHI BUG and diseases like Sheath blight and Blast affect which crop?*

- a) RICE
- b) COTTON
- c) POTATO
- d) WHEAT

*3) Krasnodar Krai is a popular holiday destination of this country. This region was ravaged by torrential rain bringing massive flood and landslide in July 2012. This unprecedented disaster caused widespread death and destruction. Climate change is mostly blamed for this. To which country does Krasnodar belong?*

- a) RUSSIA*
- b) GERMANY*

c) *JAPAN*

d) *ANGOLA*

4) *The aquatic environment of which Indian lake is threatened by the rapid growth of a plant species named Phragmites karka , accelerating siltation?*

a) *DAL*

b) *CHILIKA*

c) *ULLAR*

d) *LOKTOK*

5) *Prakruti Rakshati Rakshati {nature protects if she is protected} is the slogan of the UN conference on parties to the convention of Biological Diversity. Where was the conference*

*held in 2012?*

- a) BANGALORE*
- b) AHMEDABAD*
- c) HYDERABAD*
- d) CHANDIGARH*

*6) The national tree of India is*

- a) PEEPAL TREE*
- b) BANYAN TREE*
- c) MANGO TREE*
- d) ASHOKA TREE*

7) *Tear mark or Tear stripe is common in ...*

- a) *LION*
- b) *CHEETAH*
- c) *TIGER*
- d) *BEAR*

8) *WII { Wildlife Institute of India } is located in....*

- a) *NEW DELHI*
- b) *MUMBAI*
- c) *PATNA*
- d) *DEHRADUN*



9) *The habit of climbing trees is common in*

a) *LEOPARD*

b) *LION*

c) *ELEHANT*

d) *TIGER*

10) *The largest living terrestrial animal in the world*

a) *ELEHANT*

b) *RHINOCEROS*

c) *TIGER*

d) *NONE OF THE ABOVE*

**HOW CAN YOU MAKE  
A DIFFERENCE ....**

*Extend your generosity and open your heart to help animals that can't ask for help but need it so immensely. It's easy to make a difference for animals today and everyday.*

*Get involved with the NGO's near by your home or a national group like WWF (World Wildlife Fund). By supporting such groups you can become one of the millions people who are protecting natural land and animals.*

# DO YOU KNOW ?

*You can actually help the environment if you buy recyclable products.*

*Recyclable products are usually made out of things that have been already used.*

*It takes less energy to make recycled products.*

**WAYS THAT CAN  
MAKE YOU ECO -  
FRIENDLY AND  
SAVES YOUR  
MONEY TOO ....**

- *Issue books from libraries rather than buying personal books.*
- *Wear clothes that don't need to be dry cleaned.*
- *Buy organic products only.*
- *Use more of public transport.*
- *Donate your electronics or recycle them when the right time comes.*

**WANT TO BE FIT**

**+**

**ECO-FRIENDLY ?**

*• Stop going to gym, rather jog or walk in the park. This will give your lungs fresh air, saves electricity and you'll surely loose weight too.*

*• Wash your clothes with your hands rather using Washing machines. This will help you loose mass around your arms and even saves water.*



# ST. THOMAS'

- ▣ *Be an Eco-Club member.*
- ▣ *Visit the school's herb garden to learn about herbs that can be grown in our backyards.*
- ▣ *Learn to recycle products in the recycling workshops and recycling room.*

*•Join Tod Phod Jodh Lets break and create, recycle and reuse .*

*•GREEN BAZAAR was so much fun with great learning.*

*•Enroll for Eco Slate workshop, lets learn to audit. It helps us to reflect our lifestyle.*

**ANNUAL  
ECO-EXHIBITION  
CUM MEET  
2012-13**



*Participation in the annual Eco- Exhibition Cum Meet 2013 gave us the opportunity to organize stall and display Eco Club Activities . The working models, paper Mache products, recycled items, artifacts promoting conservation garnered much appreciations.*

# VALUABLE FEEDBACKS

- ① 2-2-2013 Install Samajhdaar Vyapar I liked very much.  
I wish her best wishes. Thanks.  
Nishant  
9827791528
  - ② Use of water cooler instead of A/C  
is admirable
  - ③ V. Good Keep it up Sh  
9871328871
  - ④ Very creative and attractive!
  - ⑤ Very Good Creations Love
  - ⑥ Very Good - works. A
- Great Effort.  
Pulley
7. Creative approach to conserve environment - Arpit Agarwal  
Eco magazine
  8. Very good approach in creativity to use  
paper. Love DAV public school, Khna Khurd.
  9. Very Creative Approach of reuse & recycle Ashe  
DAV Noida

Please share your thoughts with us....

- Awesome presentation  
Mobile
- Very good  
Ranba
- Very nice  
Seema  
S.B.M Rajouri Garden
- Very Innovative &  
Creative  
Ania
- very good  
Sheela Dikshit
- V. Good  
Arjun
- going good  
keep it up  
aparna
- Great presentation.  
keep up the creativity  
Chandu  
HINDU  
COLLEGE

Thank You .....

Eco Club: St. Thomas' School, Mandir Marg, Delhi

*The words of encouragement of the esteemed chief guest “Mrs. Sheila Dixit, Chief Minister – Delhi “ have filled us with enthusiasm and we look forward to many more creative and lifestyle altering activities in our next session 2013-14 .*

**BRIMMING WITH IDEAS ???**

**CONTACT US ON :**

[thinkertankerthomasites4you@gmail.com](mailto:thinkertankerthomasites4you@gmail.com)

**LET'S INTERVENE,  
TO MAKE OUR EARTH GREEN**



# THINKER TANKER THOMASITES

GEETIKA CHANANA , FATIMA KHUSRU,  
UMIKA CHANANA

WITH MS.SHWETA FREDERICK

**Thank you all .**  
**Stay and Live Green ...**